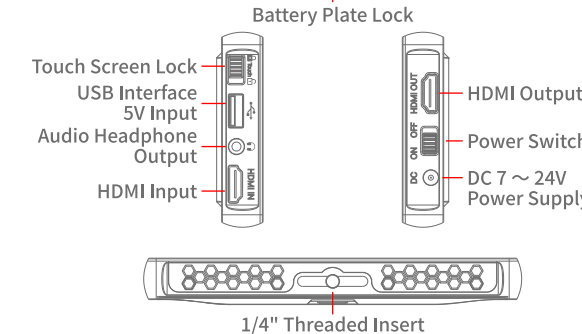
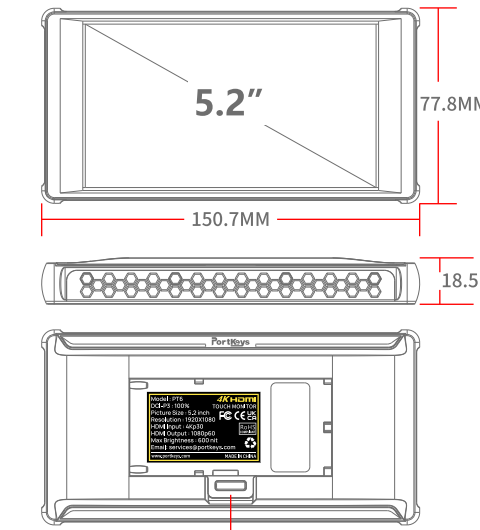


PT6

User Manual



Packing List

- 1 x PT6 Monitor
- 1 x Pair of Rubber Covers
- 1 x MH-2 Mount
- 1 x Warm Prompt Card
- 1 x HDMI to HDMI Cable
- 1 x User Manual
- 1 x Micro HDMI to HDMI Cable
- 1 x Safety Box
- 1 x Customer Feedback Card
- 1 x Sunshade

Basic Parameters

Screen	SHARP 5.2" Anti-fingerprint Coating IPS
Dimension	150.7x77.8x18.5mm
Viewing Angle	178°H/178°V
Brightness	600nit
Resolution	1920x1080
Contrast Ratio	1500:1
Weight	170g
Color Depth	10bit (8+2FRC)
Color Gamut	100% P3
Material	PC+ABS
Maximum Power	6W

Interface

Video Input/Output	Input Interface: 4K30p HDMI
	Output Interface: 1080p60 HDMI
Support Battery Model	Sony NP-F970/F960/F750/F550
	Canon LP-E6
Power Input	7~24V
USB-A	Upgrade Firmware / Load 3D LUT
	5V2A Charger Input Power Supply
Audio Output	3.5mm Headphone Jack

HDMI Input Signal

4096×2160p@24Hz
3840×2160p@23.97Hz,24Hz,25Hz,29.97Hz,30Hz
1920×1080p@23.97Hz,24Hz,25Hz,29.97Hz,30Hz,50Hz,59.94Hz,60Hz
1920×1080psf@23.97Hz,24Hz,25Hz,29.97Hz,30Hz
1920×1080i@50Hz,59.94Hz,60Hz
1280×720p@50Hz,59.94Hz,60Hz
720×576p&720×576i@50Hz
720×480p&720×480i@50Hz,59.94Hz,60Hz

HDMI Output Signal

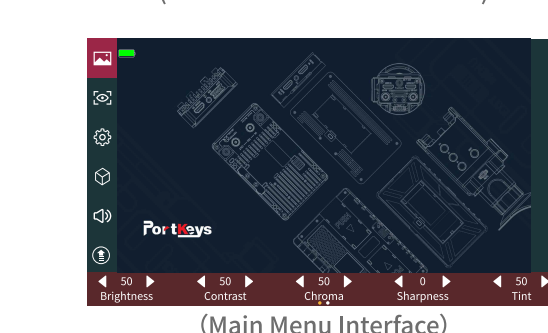
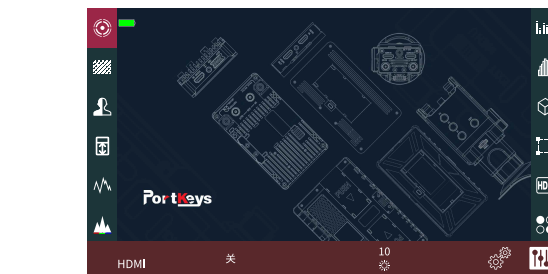
1920×1080p@60Hz

HDMI Output

3D LUT	Tint	Contrast
Luma Histogram	Chroma	HDR(HLG)
Gesture Zooming	Sharpness	UI Interface
Image Brightness	Check Field	Anamorphic
Vertical Extension	Rectangle Crop	Audio Signal

UI Operation Logic

Tap the screen, swipe left or right, cycle through the shortcut function interface and the image setting interface.

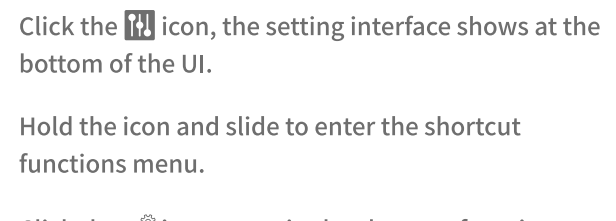


How to get in icon functions

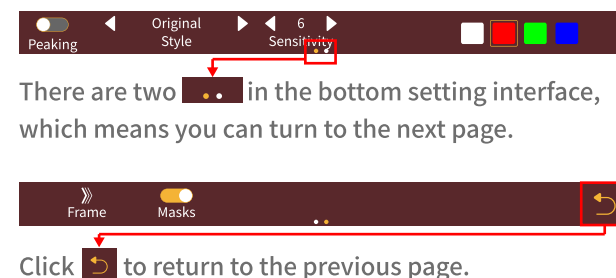
Click the icon to turn on the function; click the icon again to turn off the function.



Long press the icon, the setting interface shows at the bottom.



Click the icon to get in the shortcut functions menu.



3D LUT Loading and Deleting

In the main menu interface, click icon, 3D LUT setting interface shows at the bottom, click Stored from USB, click the 3D LUT file to use the 3D LUT file.

Load the 3D LUT file into the U disk, plug it into the monitor USB port.



Click USB Looks to enter the corresponding location of the U disk and load the 3D LUT file.

Click Stored from USB, select the 3D LUT file, hold and swipe up, select "Yes" to delete the 3D LUT file.

Firmware Upgrade

Unzip the firmware package to the root directory of the U disk.

Please make sure not to power off during the upgrade process.

Compatible with USB flash drives in FAT, FAT32, ExFAT and NTFS formats.(FAT32 is recommended)

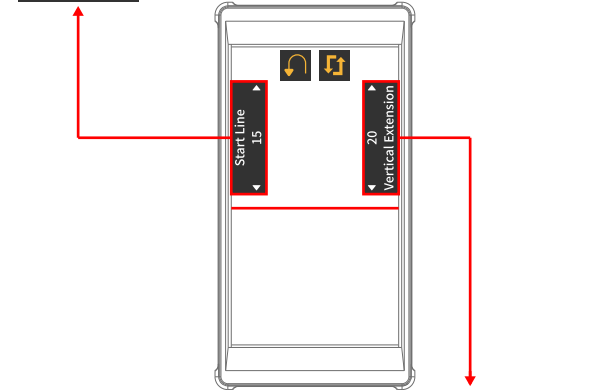
Please use a U disk with storage capacity below 16G.



Click the icon to get in the firmware upgrade interface, select Update(USB), select "Yes" to upgrade the firmware.

Vertical Extension Function

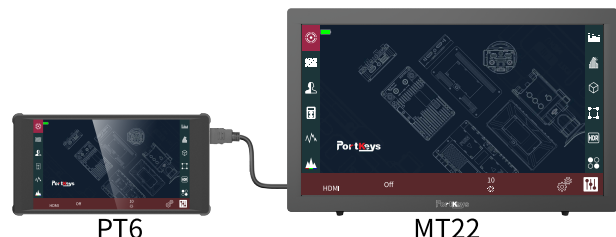
Click the icon, get in the vertical extension function setting interface; Adjust the value of the start line to customize the extension area;



Adjust the vertical extension value, you can customize the screen extension effect, the effect display area is below the red line of the screen; Click the icon to exit the function; click the icon to switch the direction of the stretching area;

UI Interface Sync Output

HDMI OUT interface can simultaneously output PT6 UI interface and some functions.



Shortcut Function Icons

Peaking	Rectangle Crop
Zebra	HDR(HLG)
False Color	Check Field
Vertical Extension	Guides
Luma Waveform	Cross Hair
RGB Waveform	Grids
Audio Meters	Add Shortcut Function
Luma Histogram	Delete Shortcut Function
3D LUT	

Bottom Settings Area Icon

HDMI Input Signal Resolution	Enter the shortcut function selection interface
Off 3D LUT Switch	Enter the shortcut function setting interface
Backlight	

Main Menu Icon

Image Setting	3D LUT
Image and Menu Flip Settings	Volume Setting
System Setting	View version information and firmware upgrades



Website:
www.portkeys.com

Email:
Services@portkeys.com

Company Address:
1406, 14th Floor, Block D, Building 3, Cloud Park, Longgang District, Shenzhen, Guangdong, China

Factory Address:
2nd Floor, Building A, Jingjiang Industrial Park, NO.101, Shangwei Road, Longhua District, Shenzhen, Guangdong, China